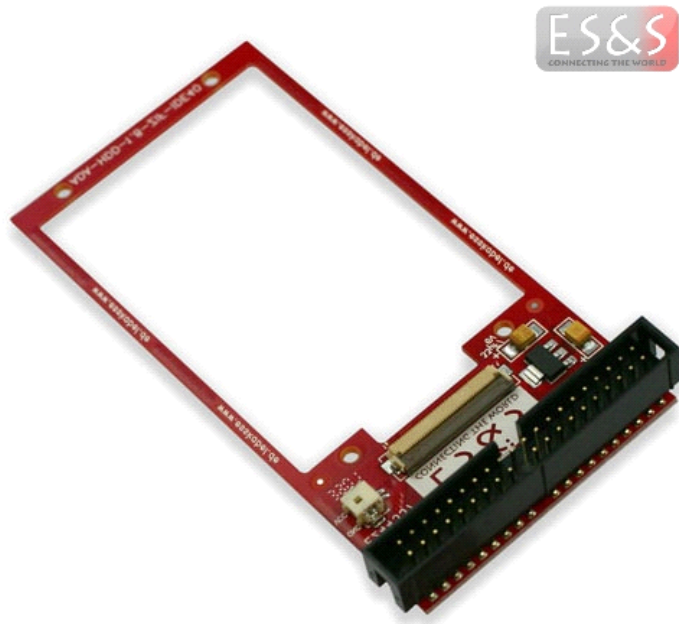


# ADA-HDD-1.8-ZIF-IDE40



Adapter for 1.8" HDD & SSD with ZIF/LIF connector

**DISCLAIMER:**

In the absence of confirmation by device specification sheets, ES&S Oliver Reiners takes no responsibility for any defects that occur in equipment using any of ES&S's devices, shown in catalogs, data books, etc. Contact ES&S in order to obtain the latest device specification sheets before using any ES&S's device. ES&S reserves the right to make changes in the specifications, characteristics, data, materials, structures and other contents described herein at any time without notice in order to improve design or reliability. Contact ES&S in order to obtain the latest specification sheets before using any ES&S's device. Manufacturing locations are also subject to change without notice. Observe the following points when using any device in this publication. ES&S takes no responsibility for damage caused by improper use of the devices. ES&S's devices shall not be used for equipment that requires extremely high level of reliability, such as: -Military and space applications -Nuclear power control equipment -Medical equipment for life support



## 1. Functional description

This adapter is designed for the mechanical connection from a 1.8" ZIF/LIF connector device to a standard 3.5" IDE40. 1.8" drives need a supply voltage of 3.3V. A voltage transformer is integrated in this adapter.

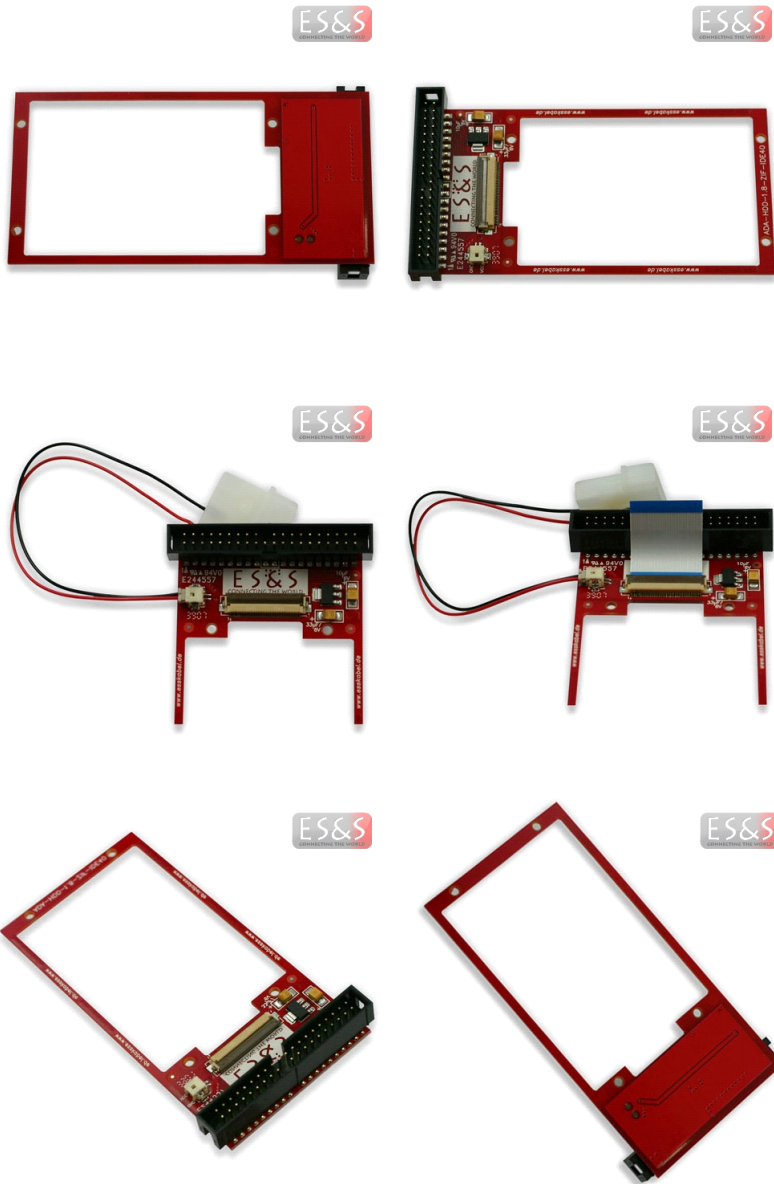
Only for use with 40-pin, pitch = 0.50 mm ZIF/LIF connector 1.8" hard disk drives!!!!

- 5V  $\geq$  3.3V voltage regulation
- for connection with IDE controller
- IDE40 plug connectors 2,54 mm pitch
- small panel thickness
- power supply cable incl. l= 100 mm
- FFC cable 40 pin, l= 30 mm;
  - side 1, HDD:  
contact length: 2 mm, conductor 0.05 mm, insulation 0.037 mm,  
stiffener: 0.16 mm, total thickness 0.247 mm!, stiffener length: 6 mm
  - side 2, adapter:  
contact length: 4 mm, conductor 0.05 mm, insulation 0.037 mm,  
stiffener: 0.16 mm, total thickness 0.247 mm!, stiffener length: 6 mm

**DISCLAIMER:**

In the absence of confirmation by device specification sheets, ES&S Oliver Reiners takes no responsibility for any defects that occur in equipment using any of ES&S's devices, shown in catalogs, data books, etc. Contact ES&S in order to obtain the latest device specification sheets before using any ES&S's device. ES&S reserves the right to make changes in the specifications, characteristics, data, materials, structures and other contents described herein at any time without notice in order to improve design or reliability. Contact ES&S in order to obtain the latest specification sheets before using any ES&S's device. Manufacturing locations are also subject to change without notice. Observe the following points when using any device in this publication. ES&S takes no responsibility for damage caused by improper use of the devices. ES&S's devices shall not be used for equipment that requires extremely high level of reliability, such as: -Military and space applications -Nuclear power control equipment -Medical equipment for life support

## 2. Pictures

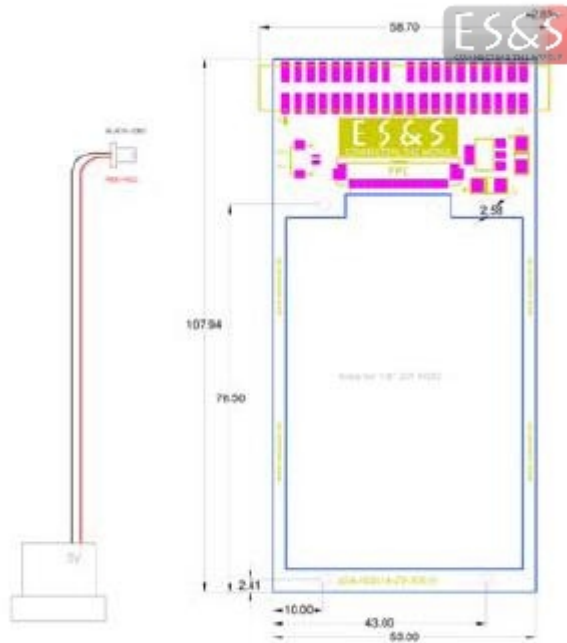


**DISCLAIMER:**

In the absence of confirmation by device specification sheets, ES&S Oliver Reiners takes no responsibility for any defects that occur in equipment using any of ES&S's devices, shown in catalogs, data books, etc. Contact ES&S in order to obtain the latest device specification sheets before using any ES&S's device. ES&S reserves the right to make changes in the specifications, characteristics, data, materials, structures and other contents described herein at any time without notice in order to improve design or reliability. Contact ES&S in order to obtain the latest specification sheets before using any ES&S's device. Manufacturing locations are also subject to change without notice. Observe the following points when using any device in this publication. ES&S takes no responsibility for damage caused by improper use of the devices. ES&S's devices shall not be used for equipment that requires extremely high level of reliability, such as: -Military and space applications -Nuclear power control equipment -Medical equipment for life support

### 3. Dimension

Size: 58.4 (l) x 108.1 (w) x 11.8 (h) (in mm)



### 4. Temperature ranges

Operating temperature: -20°C to 85°C

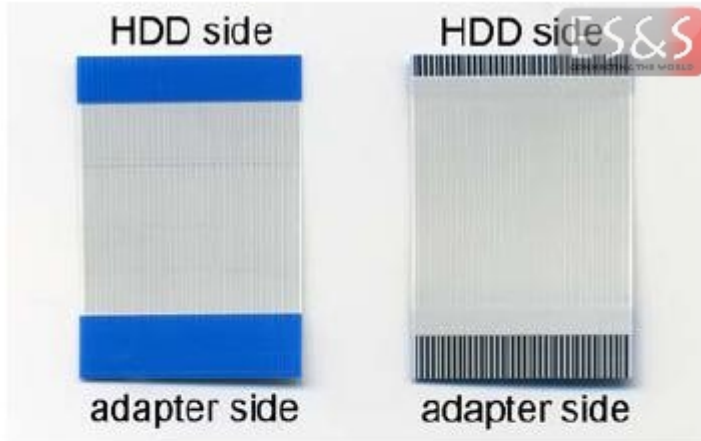
Storage temperature: -40°C to 85°C

### 5. Weight

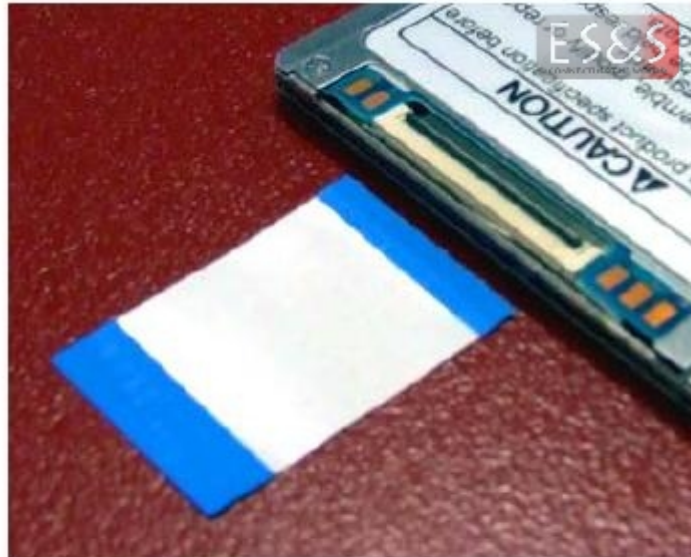
Weight without packaging: 16.8 g

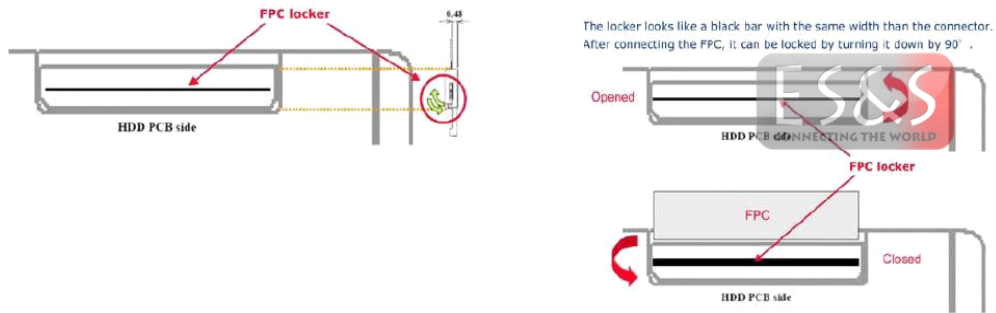
Weight with packaging: 20.4 g

### 6. How to install



1. Insert the short side of FFC cable into the 1.8" HDD and lock it by the FPC locker. Handle with care!





2. The blue stiffener must be fixed as seen in the next picture. Close both FFC connectors!



3. Now turn the drive over, onto the adapter and always remember: Handle these very sensitive units with care!!!!



DATASHEET  
**ADA-HDD-1.8-ZIF-IDE40**

## 7. Supported 1.8" Toshiba & Hitachi drives

SanDisk: SSD UATA 5000 1.8"

Hitachi: Travelstar C3K80; C4K60 Slim & C4K40 only ZIF

Toshiba: MK1011GAH, MK1214GAH, MK1626GCB, MK2008GAL, MK2431GAH,  
MK3008GAL, MK4008GAH, MK4009GAL, MK6008GAH, MK6028GAL, MK8009GAH,  
MK8025GAL

This harddrives have been checked by ES&S and are supported by this adapter,  
however, there will be many other HDD's and SSD's which are suitable but it's still not  
tested.

**DISCLAIMER:**

In the absence of confirmation by device specification sheets, ES&S Oliver Reiners takes no responsibility for any defects that occur in equipment using any of ES&S's devices, shown in catalogs, data books, etc. Contact ES&S in order to obtain the latest device specification sheets before using any ES&S's device. ES&S reserves the right to make changes in the specifications, characteristics, data, materials, structures and other contents described herein at any time without notice in order to improve design or reliability. Contact ES&S in order to obtain the latest specification sheets before using any ES&S's device. Manufacturing locations are also subject to change without notice. Observe the following points when using any device in this publication. ES&S takes no responsibility for damage caused by improper use of the devices. ES&S's devices shall not be used for equipment that requires extremely high level of reliability, such as: -Military and space applications -Nuclear power control equipment -Medical equipment for life support

## 8. Assignment

### CN1, 40pin (2 X 20), 2.54 mm



RESET-	1	2	GND
DD7	3	4	DD8
DD6	5	6	DD9
DD5	7	8	DD10
DD4	9	10	DD11
DD3	11	12	DD12
DD2	13	14	DD13
DD1	15	16	DD14
DD0	17	18	DD15
GND	19	20	Key
DMARQ	21	22	GND
DIOW	23	24	GND
DIOR	25	26	GND
IORDY	27	28	CSEL
DMACK-	29	30	GND
INTRQ	31	32	Obsolete
DA1	33	34	PDIAG-
DA0	35	36	DA2
CS0-	37	38	CS1-
DASP-	39	40	GND

T13.org, T13/1410D revision 2a

**DISCLAIMER:**

In the absence of confirmation by device specification sheets, ES&S Oliver Reiners takes no responsibility for any defects that occur in equipment using any of ES&S's devices, shown in catalogs, data books, etc. Contact ES&S in order to obtain the latest device specification sheets before using any ES&S's device. ES&S reserves the right to make changes in the specifications, characteristics, data, materials, structures and other contents described herein at any time without notice in order to improve design or reliability. Contact ES&S in order to obtain the latest specification sheets before using any ES&S's device. Manufacturing locations are also subject to change without notice. Observe the following points when using any device in this publication. ES&S takes no responsibility for damage caused by improper use of the devices. ES&S's devices shall not be used for equipment that requires extremely high level of reliability, such as: -Military and space applications -Nuclear power control equipment -Medical equipment for life support