



**Aim:** Simplification connection technology of 18 BIT digital displays (TFT)

**Realisation:** Using the standardised connector all required signals for 18 BIT digital displays are available.

The extremely small connector can be designed from one of "developer" to the control assembly.

Selected connector is 1.27x1.27 mm from pin to pin.

**Advantage:** The connection cable's looms are defined. Only cable length is customized.

Afterwards the cable can be clearly faster produced because all the plans and test equipment are exist.

Here is the one abridged version about backed up display (over 150)  
Complete list you can find here:

**DISCLAIMER:**

In the absence of confirmation by device specification sheets, ES&S Oliver Reiners takes no responsibility for any defects that occur in equipment using any of ES&S's devices, shown in catalogs, data books, etc. Contact ES&S in order to obtain the latest device specification sheets before using any ES&S's device. ES&S reserves the right to make changes in the specifications, characteristics, data, materials, structures and other contents described herein at any time without notice in order to improve design or reliability. Contact ES&S in order to obtain the latest specification sheets before using any ES&S's device. Manufacturing locations are also subject to change without notice. Observe the following points when using any device in this publication. ES&S takes no responsibility for damage caused by improper use of the devices. ES&S's devices shall not be used for equipment that requires extremely high level of reliability, such as:

- Military and space applications
- Nuclear power control equipment
- Medical equipment for life support

**REVISED DETAILS**

1.1. formal text change PCB -> SMD ( connector spec ) 14.2.2005 OR

1.2. pinning added

1.3. change language to English

**ES&S Oliver Reiners** • Gewerbering 2 • D-41751 Viersen • fon: +49 (0) 2162 - 266 18 0 • fax: +49 (0) 2162 - 266 18 88 • <http://www.esskabel.de>



	name:	date:
build:	A. Niederholz	13.07.05
checked:	Oliver Reiners	13.07.05
approved:	A. Niederholz	13.07.05

SPEC.: ESDCI DEFINITION      REV: 1.3

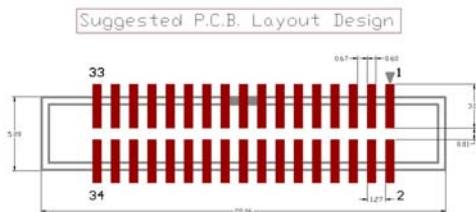
Manufacture, Layout & item number:

Pin-assignment:  
ESDCI18  
STE-C44-34

not used	1
not used	2
GND	3
CLK	4
HSYNC	5
VSYNC	6
GND	7
R0	8
R1	9
R2	10
R3	11
R4	12
R5	13
GND	14
G0	15
G1	16
G2	17

G3	18
G4	19
G5	20
GND	21
B0	22
B1	23
B2	24
B3	25
B4	26
B5	27
GND	28
ENAB	29
Vcc	30
Vcc	31
OPT1	32
OPT2	33
not used	34

**Type:**                    DON CONNEX Electronics Co., Ltd.  
5F, NO.10, Lane 52  
TA-AN-Street  
HSI-CHIH CITY, Tapei Hsien  
www.donnex.com.tw



**DISCLAIMER:**

In the absence of confirmation by device specification sheets, ES&S Oliver Reiners takes no responsibility for any defects that occur in equipment using any of ES&S's devices, shown in catalogs, data books, etc. Contact ES&S in order to obtain the latest device specification sheets before using any ES&S's device. ES&S reserves the right to make changes in the specifications, characteristics, data, materials, structures and other contents described herein at any time without notice in order to improve design or reliability. Contact ES&S in order to obtain the latest specification sheets before using any ES&S's device. Manufacturing locations are also subject to change without notice. Observe the following points when using any device in this publication. ES&S takes no responsibility for damage caused by improper use of the devices. ES&S's devices shall not be used for equipment that requires extremely high level of reliability, such as:  
-Military and space applications  
-Nuclear power control equipment  
-Medical equipment for life support

## REVISED DETAILS

1.1. formal text change PCB -> SMD ( connector spec ) 14.2.2005 OR

1.2. pinning added

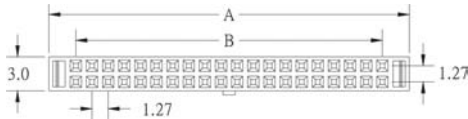
1.3. change language to English

name:		date:	
build:	A. Niederholz	13.07.05	
checked:	Oliver Reiners	13.07.05	
approved:	A. Niederholz	13.07.05	

SPEC.: ESDCI DEFINITION      REV: 1.3

**For the cable assembly:**

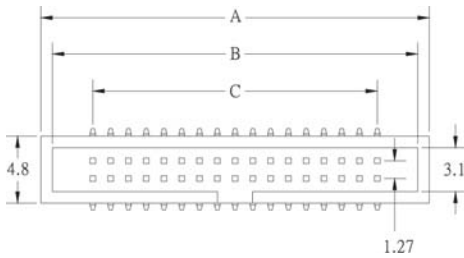
STE-A32-34-C-G-B-1



POSITION	A	B
34	25,8	20,32

**For PCB assembly:**

ESDCI<sup>®</sup> connector  
STE-C44-34-B-S-1      SMD



POSITION	A	B	C
34	27,75	26,09	20,32

Application: Upon completion of designs divers displays (from LG, TOSHIBA, SCHARP...) could be connected with a help of defined cable looms.

**DISCLAIMER:**

In the absence of confirmation by device specification sheets, ES&S Oliver Reiners takes no responsibility for any defects that occur in equipment using any of ES&S's devices, shown in catalogs, data books, etc. Contact ES&S in order to obtain the latest device specification sheets before using any ES&S's device. ES&S reserves the right to make changes in the specifications, characteristics, data, materials, structures and other contents described herein at any time without notice in order to improve design or reliability. Contact ES&S in order to obtain the latest specification sheets before using any ES&S's device. Manufacturing locations are also subject to change without notice. Observe the following points when using any device in this publication. ES&S takes no responsibility for damage caused by improper use of the devices. ES&S's devices shall not be used for equipment that requires extremely high level of reliability, such as:  
 -Military and space applications  
 -Nuclear power control equipment  
 -Medical equipment for life support

**REVISED DETAILS**

- 1.1. formal text change PCB -> SMD ( connector spec ) 14.2.2005 OR
- 1.2. pinning added
- 1.3. change language to English



SPEC.: ESDCI DEFINITION

REV: 1.3

## Examples: Connection version for ESDCI®

### ADA-ESDCI-FI-X30-I

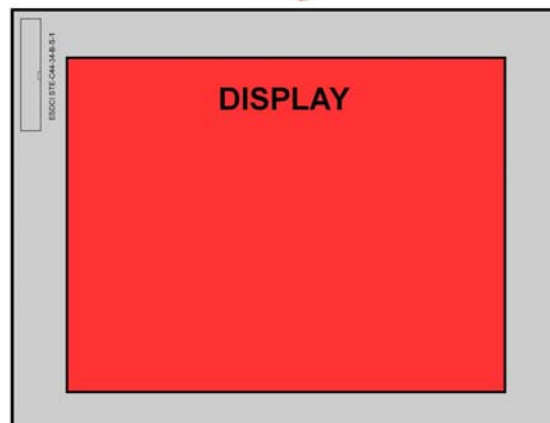
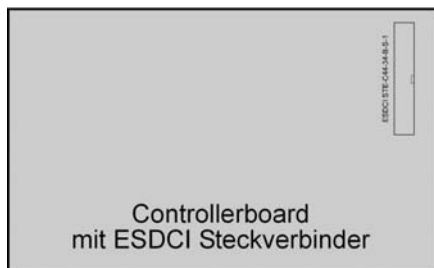
Adapter to connect ESDCI® cables with different 18 BIT digital display's using connector JAE FI-X30H with attached pinout.



### ADA-ESDCI-SHARP10

Adapter to connect ESDCI® cables with different 18 BIT digital display's using connector Hirose DF9-31.

## Example: Concept



**DISCLAIMER:**

In the absence of confirmation by device specification sheets, ES&S Oliver Reiners takes no responsibility for any defects that occur in equipment using any of ES&S's devices, shown in catalogs, data books, etc. Contact ES&S in order to obtain the latest device specification sheets before using any ES&S's device. ES&S reserves the right to make changes in the specifications, characteristics, data, materials, structures and other contents described herein at any time without notice in order to improve design or reliability. Contact ES&S in order to obtain the latest specification sheets before using any ES&S's device. Manufacturing locations are also subject to change without notice. Observe the following points when using any device in this publication. ES&S takes no responsibility for damage caused by improper use of the devices. ES&S's devices shall not be used for equipment that requires extremely high level of reliability, such as:  
 -Military and space applications  
 -Nuclear power control equipment  
 -Medical equipment for life support

## REVISED DETAILS

1.1. formal text change PCB -> SMD ( connector spec ) 14.2.2005 OR

1.2. pinning added

1.3. change language to English

Display type no.	Format	Type	manufac.	Adapter	comment for ESDCI Receiver
AA104VA01	640x480	digital	mitsubishi	ADA-ESDCI-SHARP10	
HLD0604-010000	640x480	digital	HOSIDEN	ADA-ESDCI-SHARP10	
HLD1210-HIBRITE-800	800x600	digital	HOSIDEN	ADA-ESDCI-SHARP12	
HLD1511	1024x768	digital	HOSIDEN	ADA-ESDCI-SHARP12	<b>JP4 / JP5 open!!</b>
I-SFT 50i.2	640x480	digital	SIEMENS	ADA-ESDCI-IDC34-I	cable only
LB064V02	640x480	digital	LG	ADA-ESDCI-FI-X30-I	cable only
LC130V01	640x480	digital	LG	ADA-ESDCI-SHARP12	<b>JP4 / JP5 open!!</b>
LMT10C209	640x480	digital	TOSHIBA	ADA-ESDCI-TOSHIBA	
LP104S2	800x600	digital	LG	ADA-ESDCI-SHARP12	
LQ064D341	640x480	digital	SHARP	ADA-ESDCI-SHARP10	
LQ084S3DG01	800x600	digital	SHARP	ADA-ESDCI-DF19-30-II	cable only
LT104V3-102	640x480	digital	SAMSUNG	ADA-ESDCI-SHARP10	
LTA065A041	640x480	digital	TOSHIBA	ADA-ESDCI-LTA065A041	FFC needed
LTD104C11S	640x480	digital	TOSHIBA	ADA-ESDCI-DF14-30-I	cable only
LTM121SI-T01	800x600	digital	Samsung	ADA-ESDCI-SHARP12	
LTM12C275	800x600	digital	TOSHIBA	ADA-ESDCI-DF14-30-I	cable only
LTM150XH-T01	1024x768	digital	SAMSUNG	ADA-ESDCI-DF14-30-II	cable only
NL6448AC20-06	640x480	digital	NEC	ADA-ESDCI-SHARP10	
NL6448BC33-46	640x480	digital	NEC	ADA-ESDCI-SHARP10	
NL6448BC33-50	640x480	digital	NEC	ADA-ESDCI-SHARP10	
NL6448BC33-53	640x480	digital	NEC	ADA-ESDCI-SHARP10	
NL6448BC33-54	640x480	digital	NEC	ADA-ESDCI-SHARP10	
NL6448BC33-59	640x480	digital	NEC	ADA-ESDCI-SHARP10	
NL6448CC33-25	640x480	digital	SIEMENS	ADA-ESDCI-IDC34-I	cable only
NL8060AC26-11	800x600	digital	NEC	ADA-ESDCI-SHARP12	
NL8060BC31-20	800x600	digital	NEC	ADA-ESDCI-SHARP12	
NL8060BC31-27	800x600	digital	NEC	ADA-ESDCI-SHARP12	
T-51382D064J-FW-P-AA	640x480	digital	OPTREX	ADA-ESDCI-SHARP10	
T-51513D104U-FW-A-AB-850	640x480	digital	OPTREX	ADA-ESDCI-SHARP10	

**DISCLAIMER:**

In the absence of confirmation by device specification sheets, ES&S Oliver Reiners takes no responsibility for any defects that occur in equipment using any of ES&S's devices, shown in catalogs, data books, etc. Contact ES&S in order to obtain the latest device specification sheets before using any ES&S's device. ES&S reserves the right to make changes in the specifications, characteristics, data, materials, structures and other contents described herein at any time without notice in order to improve design or reliability. Contact ES&S in order to obtain the latest specification sheets before using any ES&S's device. Manufacturing locations are also subject to change without notice. Observe the following points when using any device in this publication. ES&S takes no responsibility for damage caused by improper use of the devices. ES&S's devices shall not be used for equipment that requires extremely high level of reliability, such as:

- Military and space applications
- Nuclear power control equipment
- Medical equipment for life support

**REVISED DETAILS**

1.1. formal text change PCB -&gt; SMD ( connector spec ) 14.2.2005 OR

1.2. pinning added

1.3. change language to English