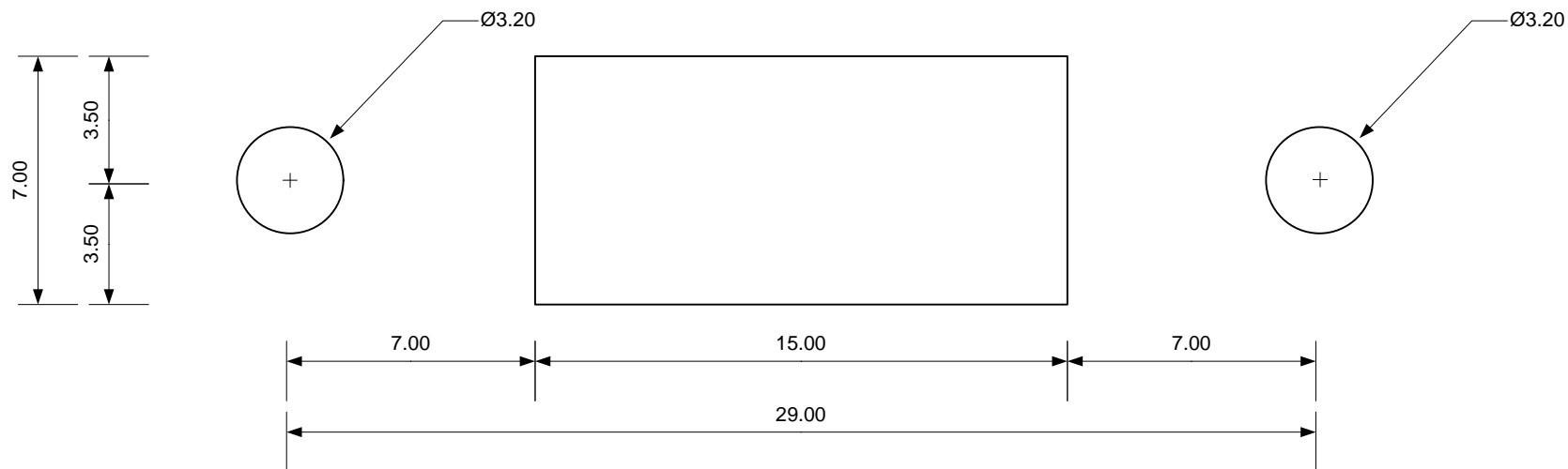


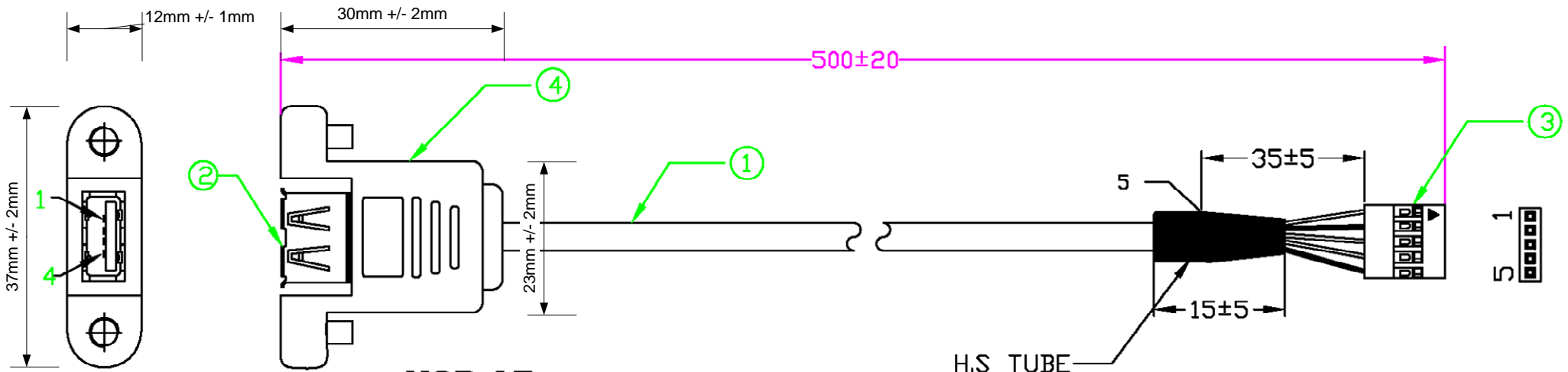
Beispielausschnitt für Anschlussflansche USB A female

(bei stärkeren Wandungen als 1.50mm muss der mittlere eckige Ausbruch evtl. vergrößert werden, damit der USB Stecker auch tief genug eingesteckt werden kann)



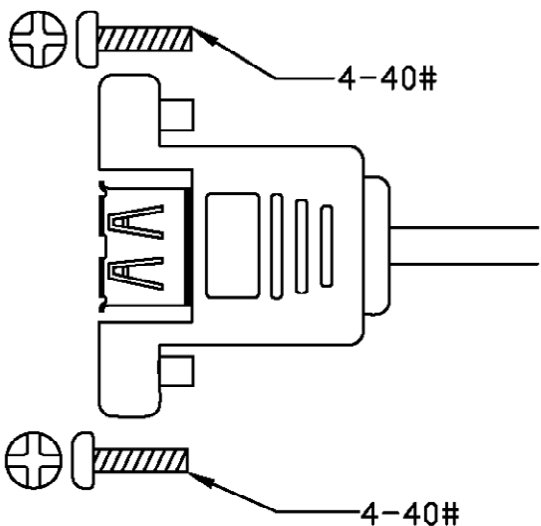
DISCLAIMER

In the absence of confirmation by device specification sheets, ES&S Oliver Reiners takes no responsibility for any defects that occur in equipment using any of ES&S's devices, shown in catalogs, data books, etc. Contact ES&S in order to obtain the latest device specification sheets before using any ES&S's device. ES&S reserves the right to make changes in the specifications, characteristics, data, materials, structures and other contents described herein at any time without notice in order to improve design or reliability. Contact ES&S in order to obtain the latest specification sheets before using any ES&S's device. Manufacturing locations are also subject to change without notice. Observe the following points when using any device in this publication. ES&S takes no responsibility for damage caused by improper use of the devices. ES&S's devices shall not be used for equipment that requires extremely high level of reliability, such as:
 -Military and space applications -Nuclear power control equipment -Medical equipment for life support



USB AF

H.S. TUBE



PIN ASSIGNMENT

USB AF	HOUSING
1 — RED	1
2 — WHITE	2
3 — GREEN	3
4 — BLACK	4
SHELL — BRAIDE	5

4	PVC MOLDED BEIGE	PCS	1
3	HOUSING 1*5 PITCH 2.54MM COLOR: BLACK	PCS	1
2	USB A TYPE FEMALE SHELL PLATED NICKEL CONTACT GOLD FLASH	PCS	1
1	UL2725 28AWG/1P+24AWG/2C+AB OD4.7±0.15MM(BEIGE)	PCS	1
NO.	DESCRIPTION	UNIT	QT'Y

UNLESS OTHERWISE SPECIFIED TOLERANCE		
ANG.	±5	
0.	±0.5	
.0	±0.3	
.00	±0.2	
SCALE:	NONE	UNIT: mm
DRAWN	ERIC XU	08/09/05
CHECKED	/ /	
APPROVED	/ /	
DRAWN NAME:		KAB-USB-A-F-1X5-0500-REV1
PRODUCT NO.		
FILE NAME:		

A	CABLE:USB2.0 AFTO HS 1*5	08/09/05
REV.	DESCRIPTION	DATE



SIZE A4

REV. A