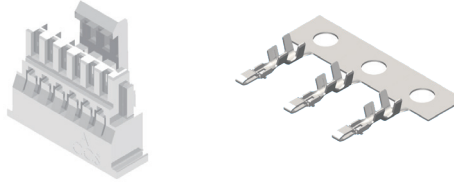


CI16 Series 1.00mm(.039") Wire to Board Connectors Housing & Terminal

- ⊙ Mate with CI16 header
- ⊙ Can be used with CI16 crimp clip terminal
- ⊙ Insulator: Nylon 66 UL 94V-0, Color Nature

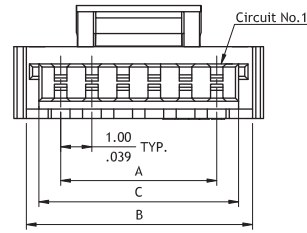
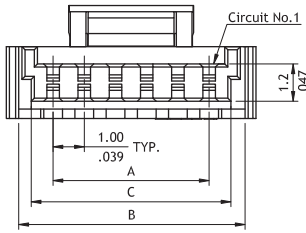


RoHS Compliant

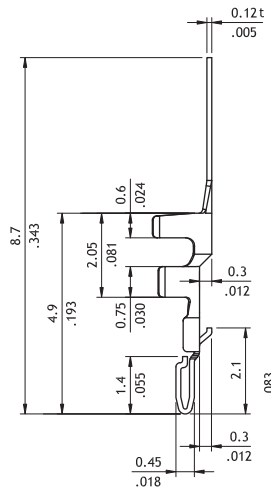
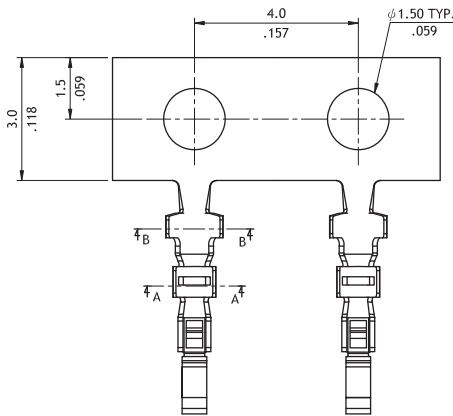
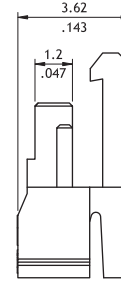
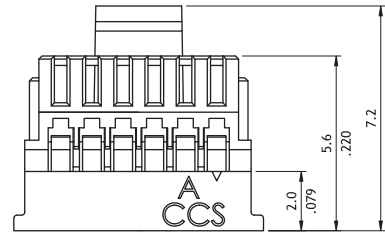
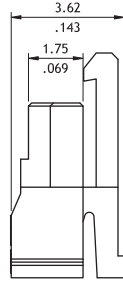
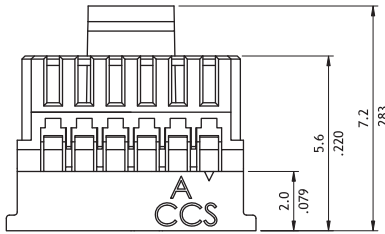


P/N CI16**SL00A-NH

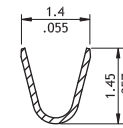
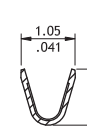
P/N CI16**SL000-NH



DIM. A = 1.00 x NO. OF SPACES
 DIM. B = DIM. A + 2.00
 DIM. C = DIM. A + 1.50



Wire Range	Insulation Diameter	Reel Qty
AWG #28-#32	0.78-0.92(mm) (.031-.036)	16,000 PCS.



Ordering Code

① C I 16 ② 20 ③ S ④ L ⑤ 000 - ⑥ NH

① C I 16 ② T01 ③ 1 ④ P ⑤ E0

- ① Series No.
- ② No. of Circuits: 02 to 20
- ③ S = Connector housing
- ④ L=With Locking Latch
- ⑤ Other Options: 000 = Standard
00A=Type 1
- ⑥ Process: -NH = For Halogen-Free

- ① Series No.
- ② Type:T01= AWG #28-#32
- ③ Plating Code: 1= Tin over Nickel
- ④ Material: P=Phosphor Bronze
- ⑤ Other Option: E0=Standard